

A woman wearing a dark grey knit beanie, a dark grey sweater, and a bright red winter jacket is lying on her back in a snowy field. Her eyes are closed, and she has a peaceful expression. The snow is bright white and covers the ground and her clothing. The text 'CAPS, HATS & BEANIES' is overlaid on the image in a large, bold, grey font, oriented vertically.

CAPS, HATS & BEANIES



CH33
PREMIUM POLYESTER HEATHER BASEBALL CAP

FABRIC
100% Polyester heather.

STYLE
6-panel structured laid back front. Pre-curved peak. Short crossover velcro. Self-colour-stitched eyelets.



BLACK GREY NAVY

CH01
HEAVY BRUSHED COTTON CAP

FABRIC
100% Heavy Brushed Cotton.

STYLE
6-panel structured, laid-back front. Pre-curved peak. Short crossover velcro.



BLACK BOTTLE CHARCOAL GOLD GREY
HOT PINK KELLY GREEN MAROON NATURAL NAVY
ORANGE PURPLE RED ROYAL SKY BLUE
WHITE





CH35

HEAVY BRUSHED COTTON CAP WITH METAL BUCKLE

FABRIC

100% Heavy Brushed Cotton.

STYLE

6-panel structured, laid-back front. Pre-curved peak. Fabric strap with gun metal buckle & tuck in return.



BLACK

NAVY



CH10

OTTOMAN PIQUE MESH CAP

FABRIC

100% Polyester Pique Mesh.

STYLE

6-panel structured, laid-back front. Pre-curved peak, Short crossover velcro closure.



BLACK

NAVY

RED

ROYAL

WHITE

CH77

PIQUE MESH CAP

FABRIC

100% Polyester Pique Mesh.

STYLE

6-panel structured, laid-back front. Breathable Pique Mesh with UPF rating 50+. Short velcro crossover.



BLACK

FLUORO ORANGE

FLUORO YELLOW

NAVY



RED

ROYAL

WHITE



UV PROTECTION



CH03
HEAVY BRUSHED COTTON UNSTRUCTURED CAP

FABRIC
100% Heavy Brushed Cotton.

STYLE
6-panel unstructured, laid-back front. Pre-curved peak. Short crossover velcro.



CH46
PREMIUM BRUSHED COTTON TWILL MILITARY CAP

FABRIC
100% Cotton Twill.

STYLE
Pre-curved peak with padded Cotton sweatband. Adjustable velcro closure at rear.



CH36
HEAVY UNBRUSHED COTTON FITTED CAP

FABRIC
98% Cotton, 2% Spandex.

STYLE
6-panel structured, laid-back front. Pre-curved peak.

SIZE
S/M & L/XL.





CH13

POLY/COTTON TWILL CAP

FABRIC
65% Polyester, 35% Cotton twill.

STYLE
6-panel structured, laid-back front. Pre-curved peak. Short velcro crossover.



CH20

POLYESTER MESH ATHLETIC CAP

FABRIC
100% Polyester mesh.

STYLE
6-panel unstructured design. Pre-curved peak, Short crossover velcro closure. Padded Cotton sweatband. Stitched eyelets. Made from breathable, colour-fast mesh fabric.



CH50

SUBURBAN SNAPBACK IMITATED WOOL CAP WITH FLAT PEAK

FABRIC
100% Acrylic.

STYLE
6-panel structured design with flat peak. Padded sweatband made of Cotton fabric. Plastic snapback fastener. Stitched eyelets.



CH40

WASHED POLO PREMIUM COTTON TWILL SANDWICH CAP



FABRIC

100% Cotton Twill.

STYLE

Washed polo with Cotton sandwich. 6-panel unstructured, laid-back front & pre-curved peak. Fabric strap with metal buckle, providing ideal space for embossed logo.



ORANGE/NAVY



NAVY/STONE



MUSTARD YELLOW/NAVY



STONE/BLACK



STONE/NAVY

CH51

UNDERPEAK CONTRAST COLOUR PREMIUM WASHED COTTON TWILL CAP



FABRIC

100% premium Cotton twill.

STYLE

Washed polo Cotton fabric. 6-panel unstructured, laid-back front & pre-curved peak. Contrasting-coloured fabric strap with metal buckle, providing ideal space for embossed logo.



BLACK/RED



NAVY/SANDSTONE



RUST/BLACK



SANDSTONE/RED



WHITE/GREY



CH18
HEAVY BRUSHED COTTON SANDWICH PEAK CAP

FABRIC
100% Heavy Brushed Cotton.

STYLE
6-panel structured, laid-back front. Pre-curved peak with contrasting sandwich. 4 metal eyelets on 4 panels & tuck in fabric strap with gun metal buckle.



CH72

PIQUE MESH CAP WITH CONTRAST SANDWICH PEAK CAP



UV PROTECTION

FABRIC

100% Polyester Pique Mesh.

STYLE

6-panel structured, laid-back front. Pre-curved peak & short velcro crossover. Breathable Pique Mesh with UPF rating 50+



CH21

POLYESTER RIPSTOP PEAK CAP WITH CONTRAST MESH LINING



FABRIC

100% Polyester ripstop.

STYLE

6-panel structured, laid-back front. Polyester ripstop with mesh lining, contrasting trim across peak & crown. Short velcro crossover.

Matching Style: JK21K Track Suit.



CH75

PREMIUM COTTON TWILL CONTRAST TRIM CAP



COTTON FABRIC

FABRIC

100% premium Cotton twill.

STYLE

6-panel structured, laid-back front. Contrasting piping across peak & crown. Short velcro crossover.



CH67
PEAK & EYELETS CONTRAST CAP



FABRIC
100% Heavy Brushed Cotton.

STYLE
6-panel structured, laid-back front. Heavy Brushed Cotton with contrasting trim on peak. Short velcro crossover.



CH81
BRUSHED COTTON TWILL BASEBALL CAP WITH "X" CONTRAST STRIPE



FABRIC
100% Heavy Brushed Cotton twill.

STYLE
6-panel structured, laid-back front. Contrasting stripe across crown & peak. Short velcro crossover.



CH82
BRUSHED COTTON TWILL BASEBALL CAP WITH CONTRAST STRIPE



FABRIC
100% Heavy Brushed Cotton twill.

STYLE
6-panel structured, laid-back front. Contrasting stripe across crown & peak. Short velcro crossover.



CH41

COTTON CONTRAST PEAK TRIM TRUCKER CAP WITH NYLON MESH BACK



COTTON FABRIC

FABRIC

100% Cotton, Nylon mesh - back

STYLE

6-panel structured, laid-back front. Contrasting colour on peak. Adjustable plastic tab closure.



CH89

COTTON TRUCKER CAP WITH NYLON MESH BACK



COTTON FABRIC

FABRIC

100% Cotton, Nylon mesh - back

STYLE

6-panel structured, laid-back front. Pre-curved peak. Embroidered eyelets. Adjustable fabric velcro closure.



CH69

PADDED POLYESTER TRUCKER CAP WITH NYLON MESH BACK



FABRIC

100% Polyester, Nylon mesh - back.

STYLE

5-panel & pre-curved peak. Adjustable plastic tab with padded Cotton sweatband.



CH05

HEAVY BRUSHED COTTON CAP WITH IMITATION SUEDE PEAK



FABRIC

100% Cotton, imitation suede - peak & crown-top

STYLE

6-panel structured, laid-back front. Pre-curved peak. Short velcro crossover.



COTTON FABRIC

CH47

SPRINT FOLDABLE POLYESTER RIPSTOP CAP



FOLDABLE PEAK

FABRIC

100% Polyester ripstop, CoolDry® mesh - back lining & sweat band.

STYLE

Unstructured cap with foldable peak, adjustable back strap for all sizes. Ultra light mesh in contrasting colours. Contoured side panels for ventilation. Excellent fit and comfort for athletes wear.

Matching styles: TS71, TS72, TS73, TS74



CH65

PREMIUM COTTON TWILL CONTRAST TRIM CAP



COTTON FABRIC

FABRIC

100% premium Cotton twill.

STYLE

6-panel structured, laid-back front. Pre-curved peak. Contrasting-coloured sandwich, eyelets, and stitching. Velcro strap closure on back of cap. Embroidery decoration can be done on crown-front, sides and back of cap.





CH53

100% COOLDRY® PIQUE MESH CAP

FABRIC

100% CoolDry® Polyester Pique Mesh.

STYLE

Structured laid-back front. Pre-curved peak. Contrasting-coloured, contoured panel from edge of front peak across side of cap to back of cap. Velcro strap closure on back of cap. Embroidery decoration can be done on crown-front, sides and back of cap.

Matching styles: PS69, PS69K, PS70, TS53, TS53K, TS54, SL53, SL54, JK53, JK53K



CH17

HEAVY BRUSHED COTTON TRIM CAP



COTTON FABRIC

FABRIC

100% Heavy Brushed Cotton.

STYLE

6-panel structured, laid-back front. Pre-curved peak. Fabric strap with gun metal buckle & tuck in return. Contrasting panels around peak and back key-hole.



BLACK/GOLD

ROYAL/GOLD

CH48

LUCKY BAMBOO CHARCOAL CAP



BAMBOO CHARCOAL

FABRIC

50% Bamboo Charcoal, 50% Recycled PET.

STYLE

4-panel unstructured style. Silver reflective sandwich and back strap. Breathable bamboo charcoal sweat band for moisture wicking. Pre-curved peak with grey Cotton underneath. Velcro strap closure on back of cap.



BLACK

NAVY

CH49

CONTRAST SANDWICH VISOR



FABRIC

65% Polyester, 35% Cotton twill.

STYLE

3-panel crown & self-fabric sweatband. Short velcro crossover.



BLACK

NAVY

NAVY/RED

NAVY/STONE



RED

WHITE

WHITE/NAVY

CH68

TRIPLE SANDWICH HEAVY BRUSHED COTTON CAP



FABRIC

100% Heavy Brushed Cotton.

STYLE

6-panel structured, laid-back front. Pre-curved peak. Roll-back contrasting sandwich trim with piped edge on peak. Short velcro crossover.



CH38

TRI-COLOUR HEAVY BRUSHED COTTON CAP



FABRIC

100% Heavy Brushed Cotton.

STYLE

6-panel structured, laid-back front. Pre-curved peak. Fabric strap with gun metal buckle & tuck in return.



CH78

ARENA TWO-TONE PREMIUM COTTON TWILL CAP



COTTON FABRIC

FABRIC

100% premium Cotton twill.

STYLE

6 panel structured laid back front, pre-curved & velcro crossover. Contrasting peak and crown with piping.



CH80

BATHURST TRI-COLOUR HEAVY BRUSHED COTTON CONTRAST CAP



COTTON FABRIC

FABRIC

100% Heavy Brushed Cotton

STYLE

6-panel structured, laid-back front. Contrasting coloured triangle shape on peak & back of crown. Gun metal buckle & tuck in return.

Matching style: JK28



CH99

CONTRAST CHECK HEAVY BRUSHED COTTON CAP WITH SANDWICH PEAK



COTTON FABRIC

FABRIC

100% Heavy Brushed Cotton.

STYLE

6-panel structured, laid-back front. Pre-curved peak. Fabric strap with metal buckle & tuck in return. Embroidered check racing.



CH83

TRI-COLOUR HEAVY BRUSHED COTTON BASEBALL CAP



FABRIC

100% Heavy Brushed Cotton.

STYLE

6-panel structured, laid-back front. Pre-curved peak with 3 colours on peak and crown. Short velcro crossover.



COTTON FABRIC

CH76

TRI-COLOUR PIQUE MESH CAP



FABRIC

100% Polyester Pique Mesh

STYLE

6-panel structured, laid-back front. Breathable Pique Mesh with UPF rating 50+. Contrasting piping on crown. Short velcro crossover.



UV PROTECTION



CH22 MARL SLOUCH BEANIE

FABRIC
100% Acrylic

STYLE
Double layer knit marl slouch beanie



MARL BLACK

MARL GREY

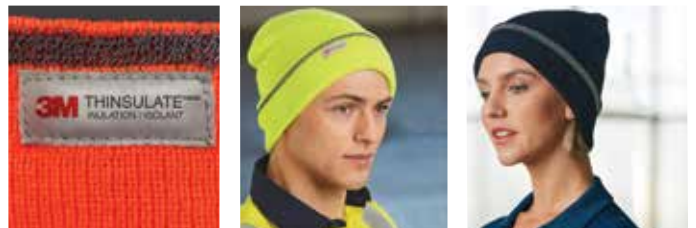
MARL NAVY



CH23 THINSULATE CUFF BEANIE

FABRIC
100% Acrylic Outer, 65% Polyolefin/35% Polyester for inner insulation.

STYLE
3M Thinsulate insulation folded with reflective stripe



BLACK



NAVY



FLUORO ORANGE



FLUORO YELLOW



CH28
ROLL-UP ACRYLIC BEANIE

FABRIC/ STYLE
100% Acrylic. Roll-up or wear deep.

SIZE
One size fits most.



CH64
CABLE KNITTED ACRYLIC BEANIE WITH FLEECE HEAD BAND

FABRIC
100% Acrylic

SIZE
One size fits most.

STYLE
Fleece lined inside head band.



CH63
CONTRAST STRIPE KNITTED ACRYLIC BEANIE

FABRIC
100% Acrylic

SIZE
One size fits most.

STYLE
Two contrasting stripes.



CH62
CABLE KNITTED ACRYLIC BEANIE

FABRIC
100% Acrylic

SIZE
One size fits most.





CH27
ROLL-UP POLAR FLEECE BEANIE

FABRIC
100% Polyester

STYLE
Rolls up for a better fit and warmth.

SIZE
One size fits most.



CH44
POLAR FLEECE BEANIE WITH EAR COVER

FABRIC
100% Polyester

SIZE
One size fits most.



CH43
POLAR FLEECE BEANIE

FABRIC
100% Polyester

SIZE
One size fits most.





CH29

SOFT WASHED HEAVY BRUSHED COTTON BUCKET HAT

FABRIC

100% Heavy Brushed Cotton

STYLE

Small metal eyelets on sides.

CH29 - SOFT WASHED HEAVY BRUSHED COTTON BUCKET HAT

SIZES	S/M	L/XL
HEAD CIRCUMFERENCE	58 - 59CM	60-61CM



NOTE:

H1027 Chin Strap with break-away clip can be attached at extra cost.



COTTON FABRIC



UV PROTECTION

CH31

SOFT WASHED HEAVY BRUSHED COTTON BUCKET HAT WITH SANDWICH PEAK

FABRIC

100% Heavy Brushed Cotton

STYLE

Small metal eyelets on sides.

CH31 - SOFT WASHED HEAVY BRUSHED COTTON BUCKET HAT WITH SANDWICH PEAK

SIZES	S/M	L/XL
HEAD CIRCUMFERENCE	58 - 59CM	60-61CM



NOTE:

H1027 Chin Strap with break-away clip can be attached at extra cost.



COTTON FABRIC



UV PROTECTION



CH32A - HEAVY BRUSHED COTTON BUCKET HAT

SIZES	S/M	L/XL
HEAD CIRCUMFERENCE	56 - 57CM	59 - 60CM



COTTON FABRIC



UV PROTECTION

CH32A

HEAVY BRUSHED COTTON BUCKET HAT

FABRIC

100% Heavy Brushed Cotton

SIZE

S/M & L/XL

STYLE

Enzyme-washed. Contrasting underbrim. Large mesh metal eyelets.



DARK NAVY/
SAND UNDERBRIM

SAND/DARK NAVY
UNDERBRIM



UV PROTECTION

CH71

PIQUE MESH BUCKET HAT WITH SANDWICH PEAK

FABRIC

100% Polyester Pique Mesh

SIZE

One Size

STYLE

Breathable Pique Mesh with UPF rating 50+. Elastic sweatband.



BLACK/RED

FLUORO
ORANGE/NAVY

FLUORO
YELLOW/NAVY

NAVY/WHITE

RED/BLACK



RED/WHITE

ROYAL/WHITE

WHITE/NAVY

CH66

HEAVY BRUSHED COTTON SURF HAT

FABRIC

100% Heavy Brushed Cotton

STYLE

UPF rating 50+. Small metal eyelets.



COTTON FABRIC



UV PROTECTION

CH66 - HEAVY BRUSHED COTTON SURF HAT

SIZES	S	M	L	XL
HEAD CIRCUMFERENCE	55cm	57cm	59cm	61cm



BOTTLE

MAROON

NATURAL

NAVY

ROYAL



H1007
WOOL BLEND CAP

FABRIC
20% wool, 80% Polyester.

STYLE
6-panel structured, laid-back front. Pre-curved peak. Short velcro.



NAVY

ROYAL



H1055
KIDS HEAVY BRUSHED COTTON CAP

FABRIC
100% Heavy Brushed Cotton.

STYLE
Adjustable back velcro.

SIZE
Fit size 42 - 56cm.



BLACK

NAVY

ROYAL

RED

WHITE



H1025
KIDS POLY/COTTON TWILL LEGONNAIRE

FABRIC
65% Polyester, 35% Cotton twill.

STYLE
5-panel square front. Hole at back with velcro.



BLACK

BOTTLE

GOLD

MAROON

NAVY

RED

ROYAL

SKY BLUE

WHITE



FRONT



BACK



UV PROTECTION

H1033

POLY/COTTON TWILL BUCKET HAT WITH SANDWICH PEAK

FABRIC

65% Polyester, 35% Cotton twill

STYLE

Contrasting sandwich. UPF rating 50+. Meets AS/NZS 4399:1999. Poly/Cotton fabric with soft brim. Self-coloured embroidered eyelets. Size-adjustable toggle outside the hat.

H1033 - POLY/COTTON TWILL BUCKET HAT WITH SANDWICH PEAK

SIZES	S/M	L/XL
HEAD CIRCUMFERENCE	57CM	61CM



BOTTLE/GOLD



BOTTLE/WHITE



MAROON/WHITE



NAVY/GOLD



NAVY/SKY BLUE



NAVY/WHITE

H1034

POLY/COTTON TWILL BUCKET HAT WITH TOGGLE

FABRIC

65% Polyester, 35% Cotton twill

STYLE

UPF rating 50+. Meets AS/NZS 4399:1999. Poly/Cotton fabric with soft brim. Self-coloured embroidered eyelet. Size-adjustable toggle outside the hat.

H1034 - POLY/COTTON TWILL BUCKET HAT WITH TOGGLE

SIZES	S/M	L/XL
HEAD CIRCUMFERENCE	57CM	61CM



FRONT



BACK



UV PROTECTION



BLACK

BOTTLE

GOLD

MAROON

NAVY



RED



ROYAL



SKY BLUE



WHITE

H1026

POLY/COTTON TWILL SLOUCH HAT WITH BREAK-AWAY CLIP STRAP



UV PROTECTION

H1026 - POLY/COTTON TWILL SLOUCH HAT WITH BREAK-AWAY CLIP STRAP

SIZES	S	M	L	XL
HEAD CIRCUMFERENCE	55cm	57cm	59cm	61cm

FABRIC

65% Polyester,
35% Cotton twill

STYLE

PF rating 50+ "Excellent Protection". Meets AS/NZS 4399:1999. Poly/Cotton fabric with hard brim. Self color metal eyelet for ventilation. Toggle and break-away clip on chin strap.



H1035

POLY/COTTON TWILL SURF HAT WITH BREAK-AWAY STRAP



UV PROTECTION

H1035 - POLY/COTTON TWILL SURF HAT WITH BREAK-AWAY CLIP STRAP

SIZES	S	M	L	XL
HEAD CIRCUMFERENCE	55cm	57cm	59cm	61cm

FABRIC

65% Polyester,
35% Cotton twill

SIZE

55cm (S), 57cm (M),
59cm (L), 61cm (XL)

STYLE

UPF rating 50+. Meets AS/NZS 4399:1999. Poly/Cotton fabric with soft brim. Large metal eyelets for ventilation. Toggle and break-away clip on chin strap.



H1027

CHIN STRAP WITH BREAK-AWAY STRAP



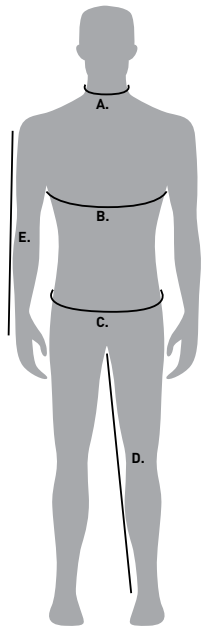
STYLE

Toggle with break-away clip and thumb press adjustable tab. Can be stitched to hats without the chin strap.



BODY AND GARMENT MEASUREMENT GUIDES

TAKING BODY MEASUREMENTS GUIDE



A. NECK

The measurement is taken around the neck, at the collar level.

B. CHEST

The measurement is taken around the fullest part of the upper chest, keeping the tape under the arms and around the shoulder blades.

C. WAIST

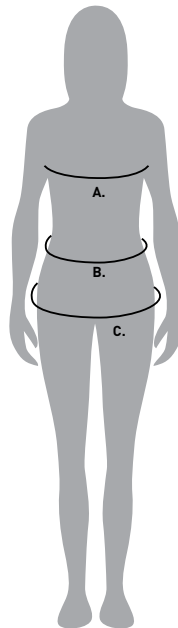
The measurement is taken around the waist, keeping one finger between the tape and the body, for a comfortable fit.

D. INSEAM

Measure from the top of the inner pant leg seam (the crotch) to the opening at the bottom of the pant leg.

E. SLEEVE

Measure the length from the top stitching on the shoulder to the bottom of the wrist. Be careful not to measure too high above the wrist.



A. BUST

The measurement is taken around the fullest part of the bust, keeping the tape under the arms and around the shoulder blades.

B. WAIST

The measurement is taken around the waist, keeping one finger between the tape and the body, for a comfortable fit.

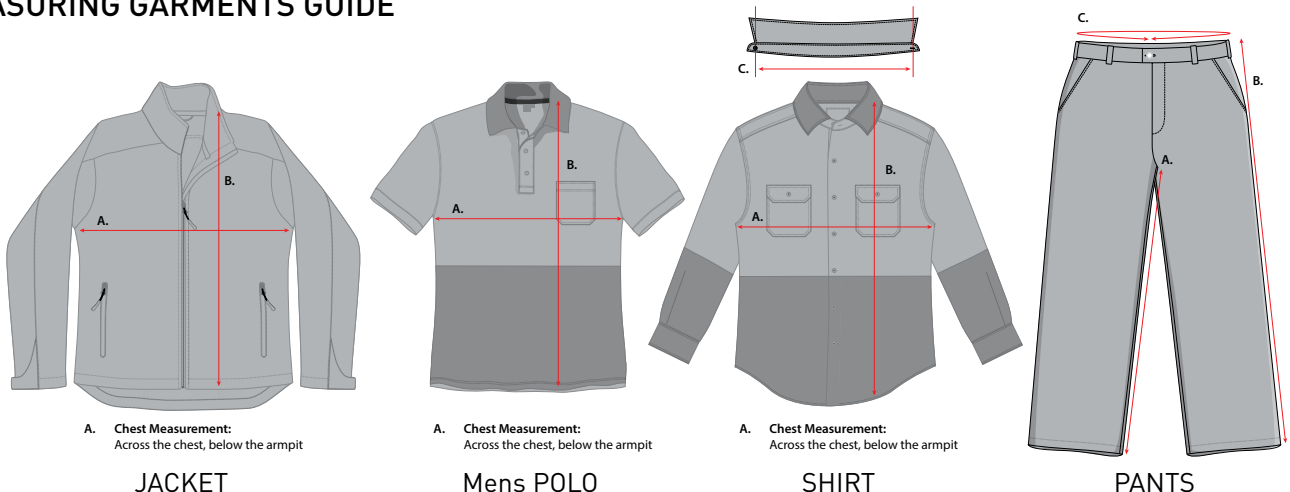
C. HIPS

The measurement is taken around the fullest part of the hips, while standing naturally (approximately 22 cm down from the waist).

CONVERTING BODY MEASUREMENTS TO GARMENT SIZES GUIDE

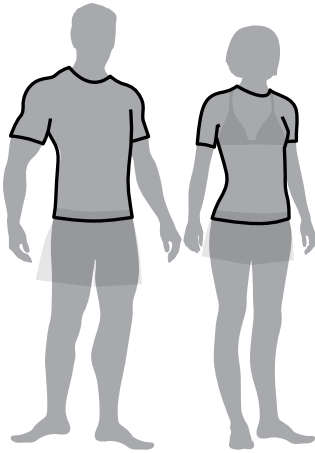
Mens JACKETS		Mens SHIRTS			Mens PANTS		LADIES TOPS			LADIES BOTTOMS		
TO FIT CHEST	SIZE	SIZE	COLLAR	TO FIT CHEST	SIZE	TO FIT WAIST	SIZE	TO FIT CHEST	TO FIT WAIST	SIZE	TO FIT WAIST	TO FIT HIP
87cm	92/XS	38/S	38cm	86/88cm	77	77/30	6	77/80	66/68	6	66/68	86/89
92cm	97/S	39/M	39cm	90/92cm	82	82/32	8/XS	82/85	71/73	8	71/73	91/94
97cm	102/M	40/M	40cm	94/96cm	87	87/34	10/S	87/90	76/78	10	76/78	96/99
102cm	107/L	41/L	41cm	98/100cm	92	92/36	12/M	92/95	81/83	12	81/83	101/104
107cm	112/XL	42/L	42cm	102/104cm	97	97/38	14/L	97/100	86/88	14	86/88	106/109
112cm	117/2XL	43/XL	43cm	106/108cm	102	102/40	16/XL	102/105	91/93	16	91/93	111/114
117cm	122/3XL	44/XL	44cm	110/112cm	107	107/42	18/XL	107/110	96/98	18	96/98	116/119
122cm	127/4XL	46/2XL	46cm	118/120cm	112	112/44	20/2XL	112/115	101/103	20	101/103	121/124
		48/3XL-4XL	48cm	126/128cm	117	117/46	22/3XL	117/120	106/108	22	106/108	126/129
		50/5XL	50cm	134/136cm			24/3XL	122/125	111/113	24	111/113	131/134
							26	127/130	116/118	26	116/118	136/139
							28	132/135	121/123			
							30	137/140	126/128			

MEASURING GARMENTS GUIDE



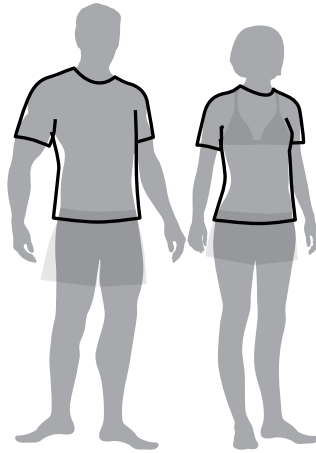
FIND YOUR BEST SIZE FIT

FINDING A FIT THAT SUITS YOUR BODY IS VERY IMPORTANT. IT NOT ONLY HELPS IN COMFORT BUT ALSO MAKES YOU LOOK GREAT. USE BELOW CHART TO CHOOSE THE CORRECT FIT THAT SUITS YOUR STYLE OR FLATTER YOUR BODY SHAPE.



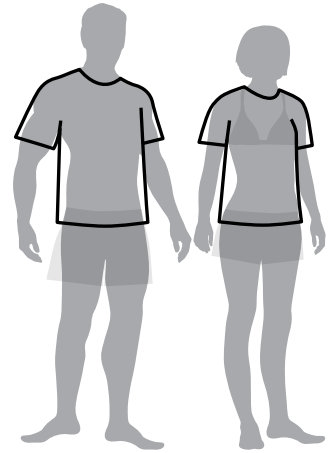
SLIM FIT

This Fit is shaped to the body. To get a semi-fitted look you may buy one size up



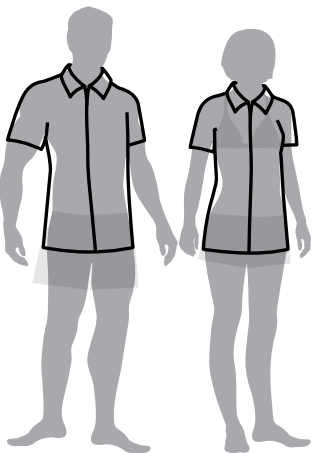
MODERN FIT

This Fit follows the shape of the body and provides ease for movement



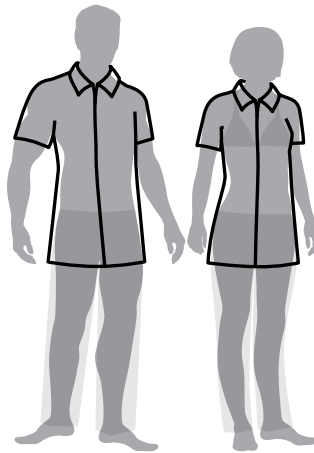
EASY FIT

This is a Fit with extra ease for movement. The garment falls free from the body



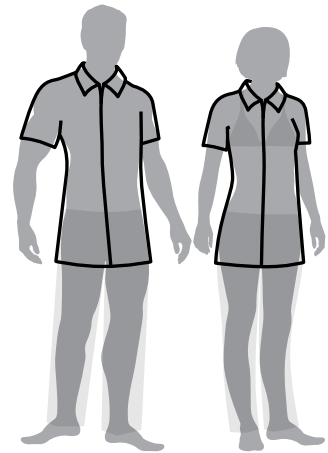
CLASSIC FIT

Follows the shape of body and provides ease for movement, shirt can be tucked into pants or wear out



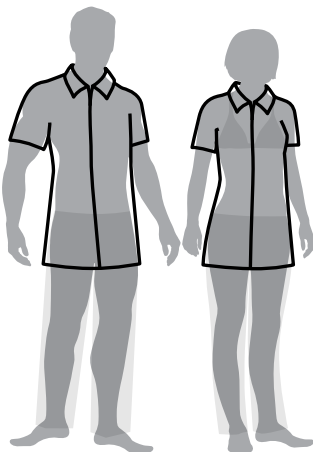
TAILORED FIT

Follows the shape of body and provides ease for movement, extra length provided to cover the back when bend down. The garment falls free from the body



MID-TAILORED FIT

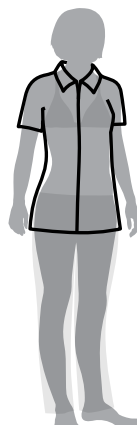
Slightly slimmer than the Tailored-Fit, creating a more tapered shape over the body.



REGULAR FIT

Follows the shape of body and provides ease for movement, extra length provided to cover the back when bend down.

The garment falls free from the body



SEMI-FITTED

Garment is gently shaped following the body contour. Compatible with most body shapes.

Please note: Our factories use the most modern and sophisticated machinery to ensure a perfect make and look for all our garments each time. Whilst all effort is made to achieve the exact standards for all our garments each time but it's because of the human content in the manufacturing process that sometime a garment may have a slight sizing variability. We are confident in bringing this range to you and know that the high quality of our products will continue to impress. Specification measurements in this catalogue relate to the garment dimensions and not body measurements.

QUALITY THAT STARTS WITH TECHNOLOGY

Our collaboration with some of the most trusted fabric mills has allowed us to create state-of-the-art designs in the workwear and safety industry. We proudly craft our collection by tailoring it to our mission of promoting safe and smart working garments.

All AIW products are manufactured from laboratory tested fabrics and treatments that conform with AUS/NZ safety standards. This is to ensure that the comfort and wear of AIW products are of the highest standard, and are suitable for the harshest Australian working environments.

AUSTRALIA AND NEW ZEALAND WORK GARMENT SAFETEY STANDARDS

AS/NZS 4602.1:2011

This standard requires at least 0.2m² of Hi-Vis fabric (AS/NZS 1906.4:2010) on the front and back to meet the day and or day/night standard. Garments designed to this standard have a compliant reflective taping configuration.

AS/NZS 1906.4:2010

We use Hi-Vis materials which are tested to Australian Standard 1906.4:2010 which outlines the requirements for fluorescent capabilities and the chromaticity reading to ensure that bright colours are within the required colour range.

AS 2001.2.18-1987

Some of AIW garments have water-repellent or water-resistant coating which stops moisture from reaching the wearer in wet-weather conditions.

AS/NZS 2622:1996

AIW workwear garments meet the requirements of AS/NZS 2622:1996 which outlines the Australian Standard for labelling of fibre content in textile products.

AS/NZS 4399:1996

AIW workwear garments provide protection against ultraviolet radiation transmitted from the sun. The sun protection rating shown is rated at: good protection (UPF 15, 20), very good protection (25, 30, 35) or excellent protection (40, 45, 50, 50+).

AS/NZS 1020:1995

AIW products reduce the amount of static electricity your body conducts by offering a large range of natural cotton fibre products. Our 100% cotton workwear naturally avoids the generation of static electricity.

ICONS AT A GLANCE



AUS/NZ 4602:1999

The garment is constructed with Hi-Vis fabrics to increase job site safety.



AUS/NZ 4602.1:2011

The garment is constructed with Hi-Vis fabrics to increase job site safety.



UV PROTECTION

Specially treated fabrics provide protection against solar ultraviolet radiation.



TOUGH WEARING

Features durable construction and is made of long lasting-fabric.



WATER & WIND RESISTANT

The garment is constructed with water and wind barriers for maximum resistance.



WATER PROOF

Special fabric finishes of fabric allow moisture from penetrating garment.



WATER REPELLENT

Special fabric finishes impede moisture from penetrating for a period of time.



WIND & COLD PROOF

The garment is constructed with a wind barrier for maximum wind resistance.



MOISTURE WICKING

The garment is constructed from specially treated Yarn for moisture wicking to make you feel dry.



INSULATIVE

Special yarn or fabric finishes maintain constant internal body temperature.



DE-ODORIZED

Natural properties of the yarn absorb and decompose odours, leaving the garment smelling fresh.



BREATHABLE

Technical finishes of fabric allow moisture to be transferred from inside to the outside of the garment.



ANTI BACTERIAL

Natural properties of the yarn provide anti-bacterial protection.



AIRFLOW VENTS

Airflow vents cooling system removes sweat and body heat through airflow vents.



STRETCH

Fabrics are engineered to stretch, providing extra comfort and flexibility.



TWO WAY STRETCH

Fabrics are engineered to stretch, providing extra comfort and flexibility.



MECHANICAL NSTRETCH

Fabrics are engineered to stretch, providing extra comfort and flexibility.



QUICK DRY

The garment is constructed from special quick drying fabric.



ULTRA LIGHT

The garment is made from light in weight materials.



EASY CARE

The garment can be machine washed and requires little to no ironing.



EASY CLEAN

Garment made from fabric/materials which allows easy cleaning.



TRUEDRY FABRIC

TrueDry[®] has Cotton added for extra comfort and reduces skin irritation. It still has the quick drying, breathability and light weight qualities of CoolDry[®].



COOLDRY FABRIC

CoolDry[®] replicates the comfort of cotton and quick drying function of polyester. It features moisture absorbing, quick drying, breathable, and light weight.



BAMBOO CHARCOAL FABRIC

Bamboo Charcoal material embedded with nano particles for deodorizing, antibacterial, anti charge built up, breathability and durability.



RAPIC COOL FABRIC

RapidCool[™] the comfort of cotton combined with the quick drying function of polyester. Moisture absorbing, quick drying, breathable, and light weight.



FABRIC

Soft shells are lightweight, abrasion-resistant garments, that provide warmth, breathability, and wind resistance without a lot of bulk.



FABRIC

DuPont[™]Teflon[®] provides durable, long-lasting protection against oil and water-based stains, dust and dry soil.



FABRIC

Made from reinforced CORDURA[®] Brand Fabric for added durability, felled seams with multiple stitching for increased strength, and reinforced pockets.



COTTON FABRIC

The garment is made from 100% cotton. It is comfortable and, being hypo-allergenic, does not irritate sensitive skin.



COTTON STRETCH FABRIC

The garment is made predominantly from Cotton with the addition of stretchable material for extra comfort.



MERINO WOOL FABRIC

The garment is made from 100% Merino Wool Fabric.



STAYS FRESH

Silver added to the fabric creates long term freshness after many washes reducing Effects of body odour.



INDUSTRIAL LAUNDRY COMPLIANT

Garments with this symbol comply with regular Industrial Laundry washing conditions.



ANTI STATIC

Agent or compound has been added into the fabric to reduce or eliminate static accumulated in the fabric.



ANTI MICROBIAL

Silver anti-microbial treatment in the material provides long term protection against bacteria and microbes.



REVERSIBLE

The garment can be worn on both sides.